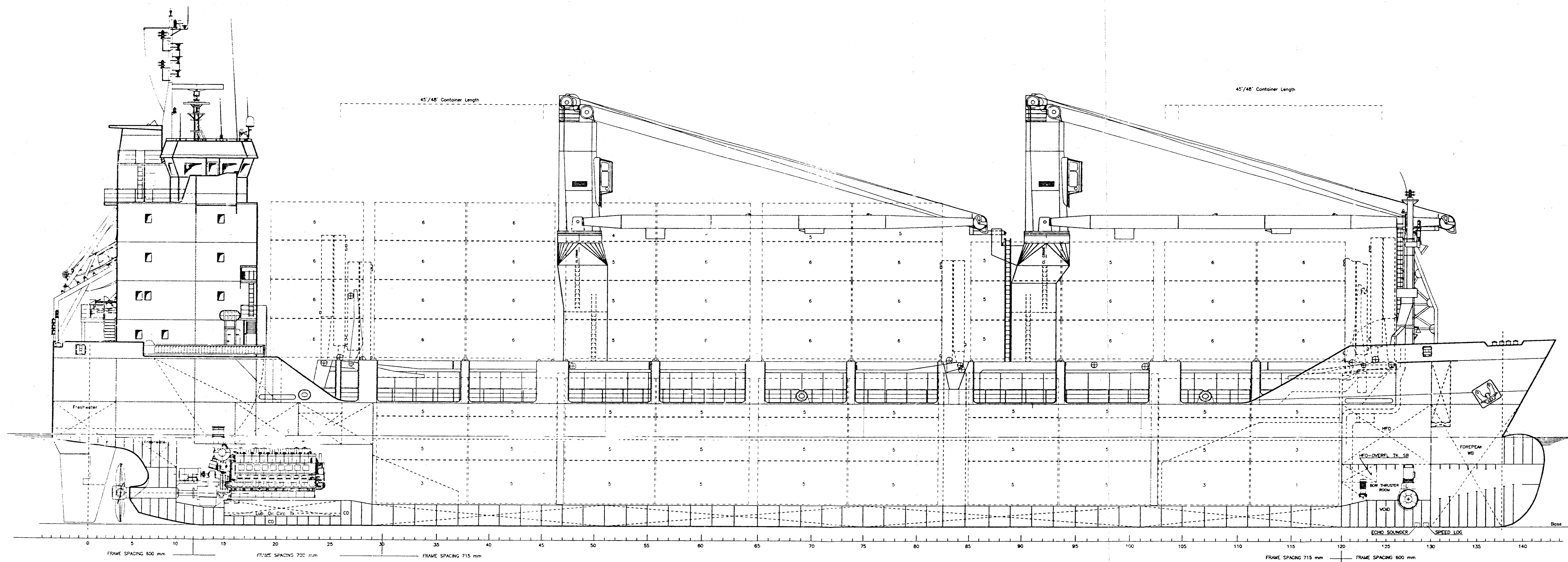
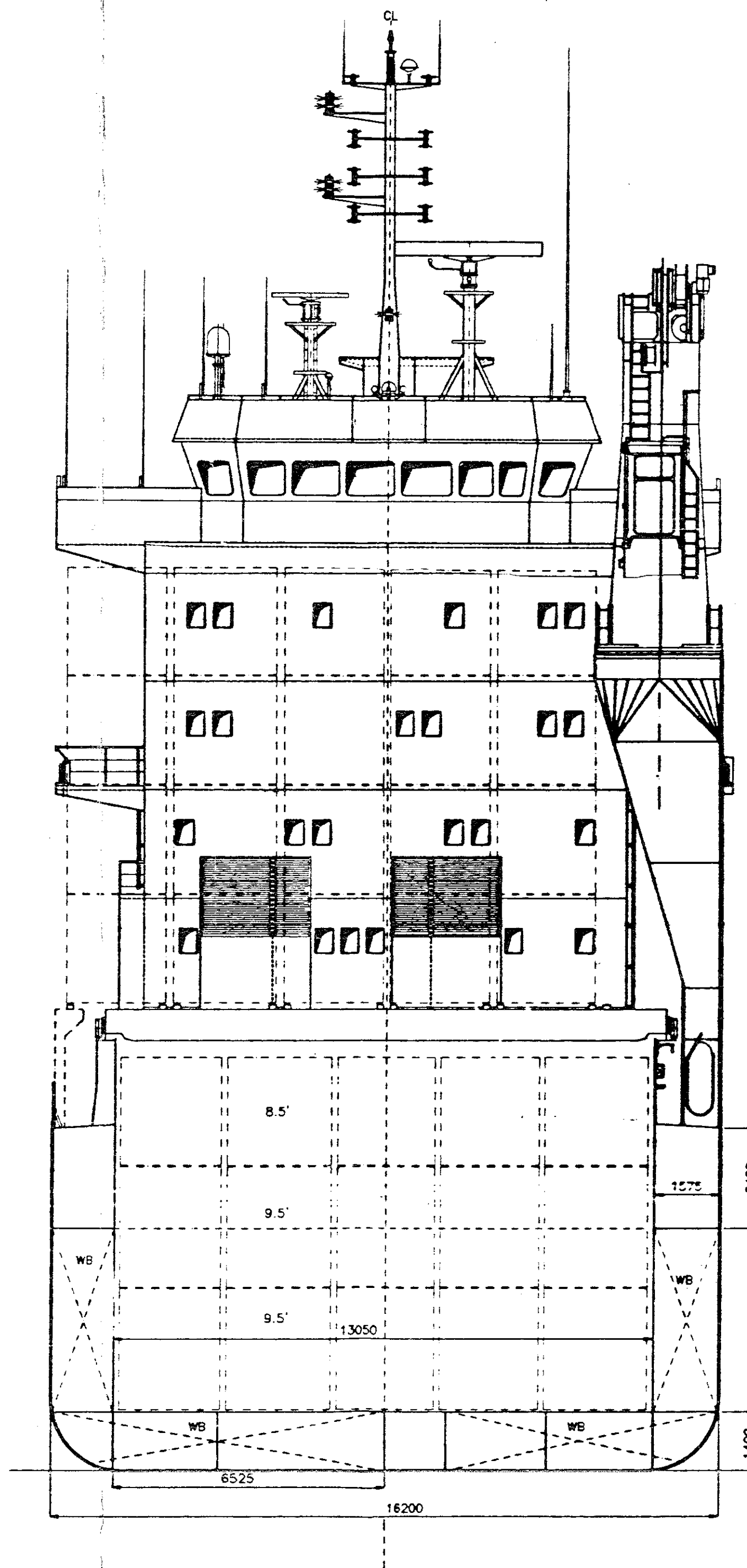


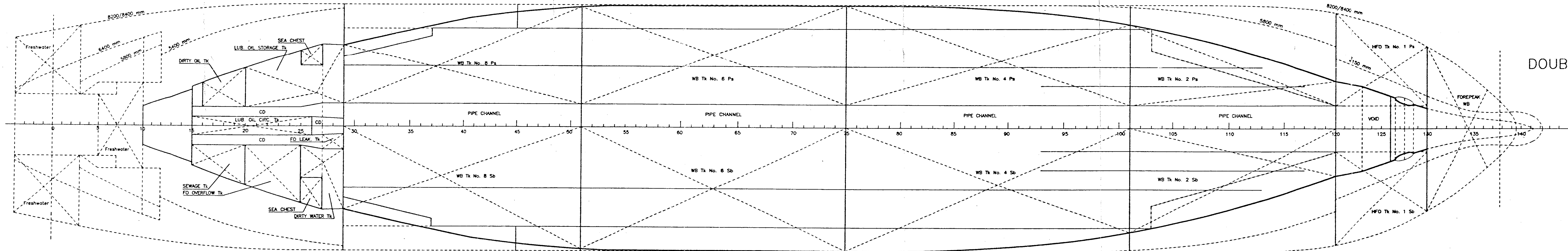
PROFILE



CROSS - SECTION
looking aft



DOUBLE BOTTOM



GENERAL ARRANGEMENT

CLASS : GL * 100 A5 E G "MPC VESSEL" NAV.-O
 EQUIPPED FOR CARRIAGE OF CONTAINERS
 SOLAS II-2, REG.54
 *MC E AUT

MAIN DATA

LENGTH.....over all	100.62 m
LENGTH.....Hull	99.95 m
LENGTH.....betw. PP	94.80 m
BREADTH.....moulded	16.20 m
DEPTH.....to MAIN DECK	8.20 m
DEPTH.....to DECK	6.40 m
DRAUGHT (scantling)	6.00 m
DEADWEIGHT	4800 mt
DRAUGHT (design)	6.00 m
DEADWEIGHT	4800 mt
CARGO HOLD CAPACITY	7235 cbm
CARGO HOLD CAPACITY	255400 cft

CONTAINER [ISO] CAPACITY

HOLD	140
HATCHES	228
TOTAL	368

SERVICE SPEED (DRAUGHT : 6.00 m) 14.75 kn
 (AT 90% OF 3520 kW, WITHOUT PTO)

ST ANDREWS

This drawing and the information contained in it are the property of ST ANDREWS. NO PART OF THIS DRAWING IS TO BE REPRODUCED OR TRANSMITTED IN ANY FORM OR BY ANY MEANS, ELECTRONIC OR MECHANICAL, INCLUDING PHOTOCOPYING, RECORDING, OR BY ANY INFORMATION STORAGE AND RETRIEVAL SYSTEM, WITHOUT THE WRITTEN PERMISSION OF ST ANDREWS. THE INFORMATION IS PROVIDED FOR THE USER'S INFORMATION ONLY.

Scale	1 : 100
Sheet	P. 1094.11
Date	01.09.95
Drawn	Tr.
Checked	
Approved	
Project	
Client	
Contract	
Revision	

GENERAL ARRANGEMENT

TMC