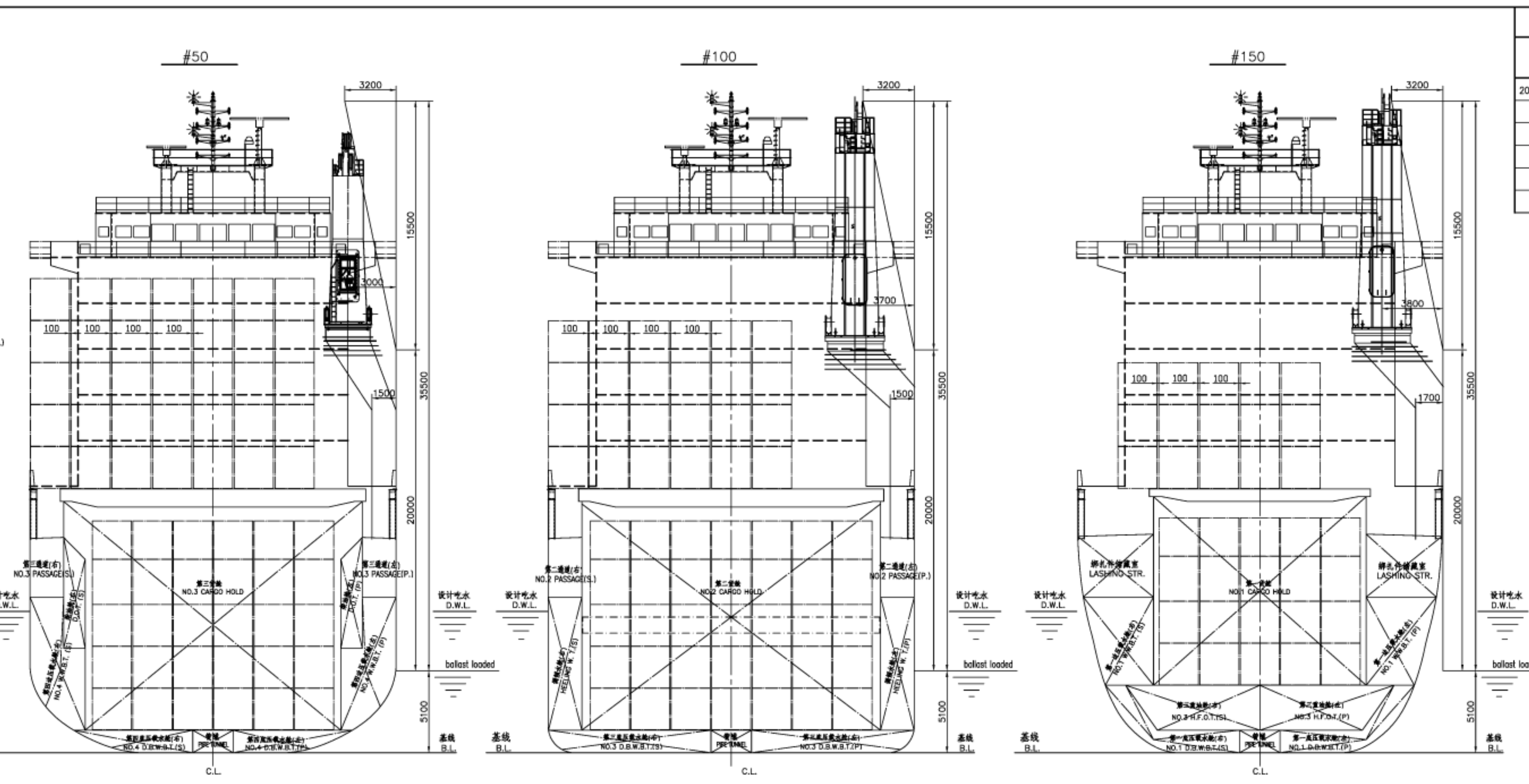
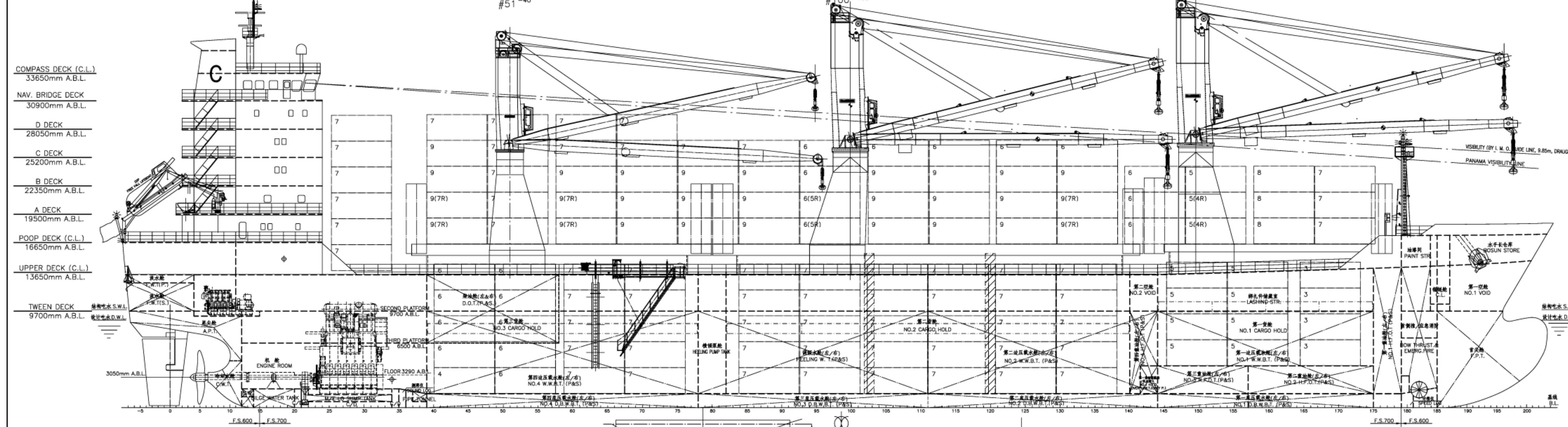
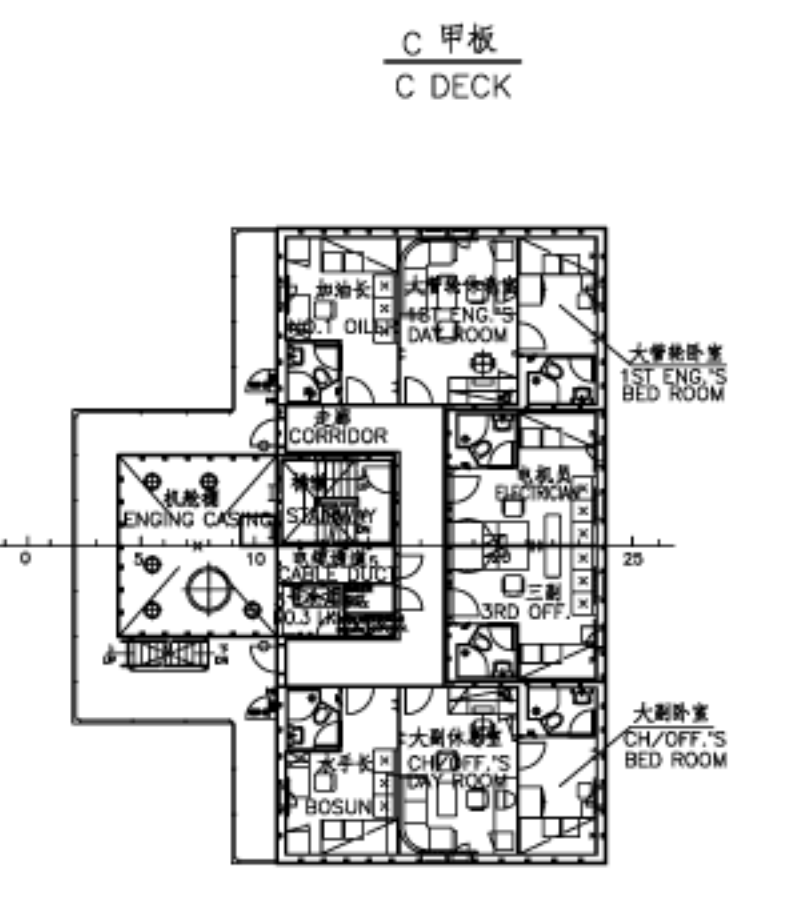
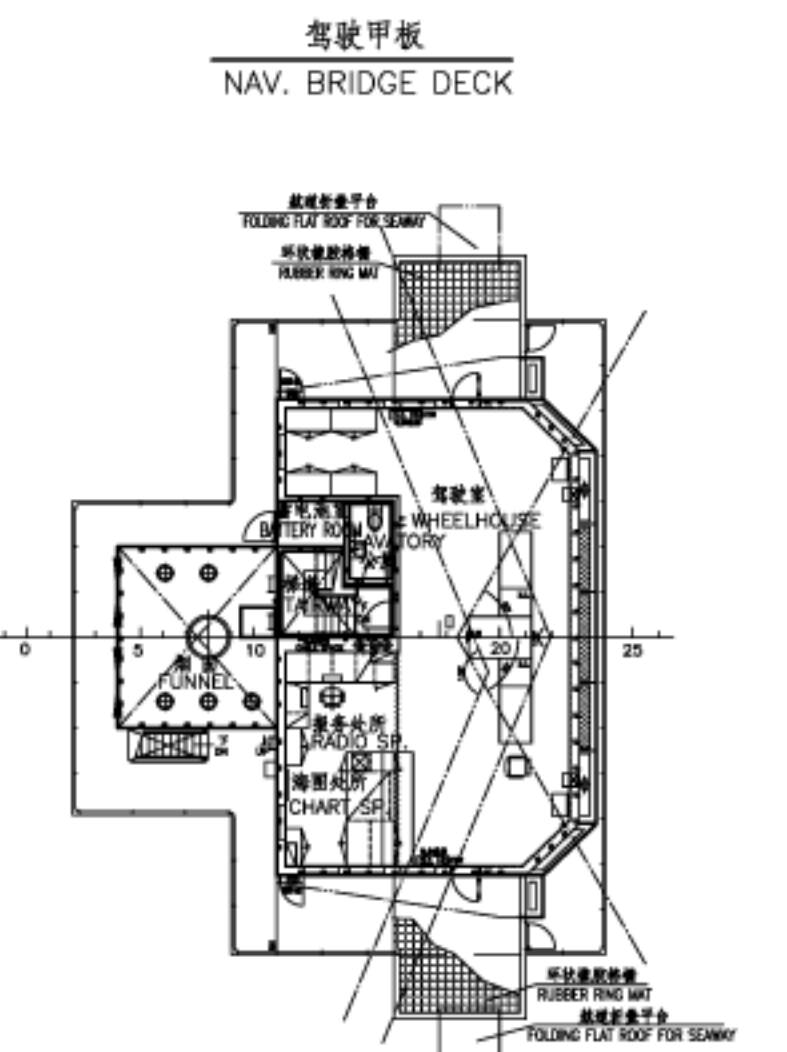
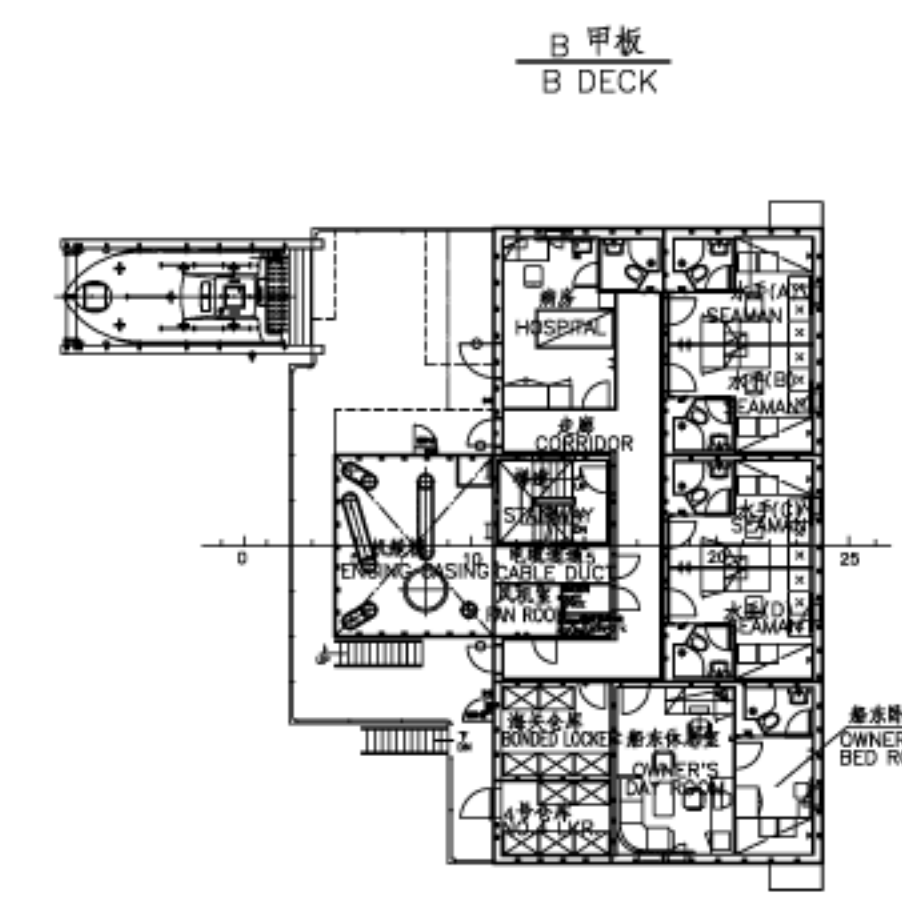
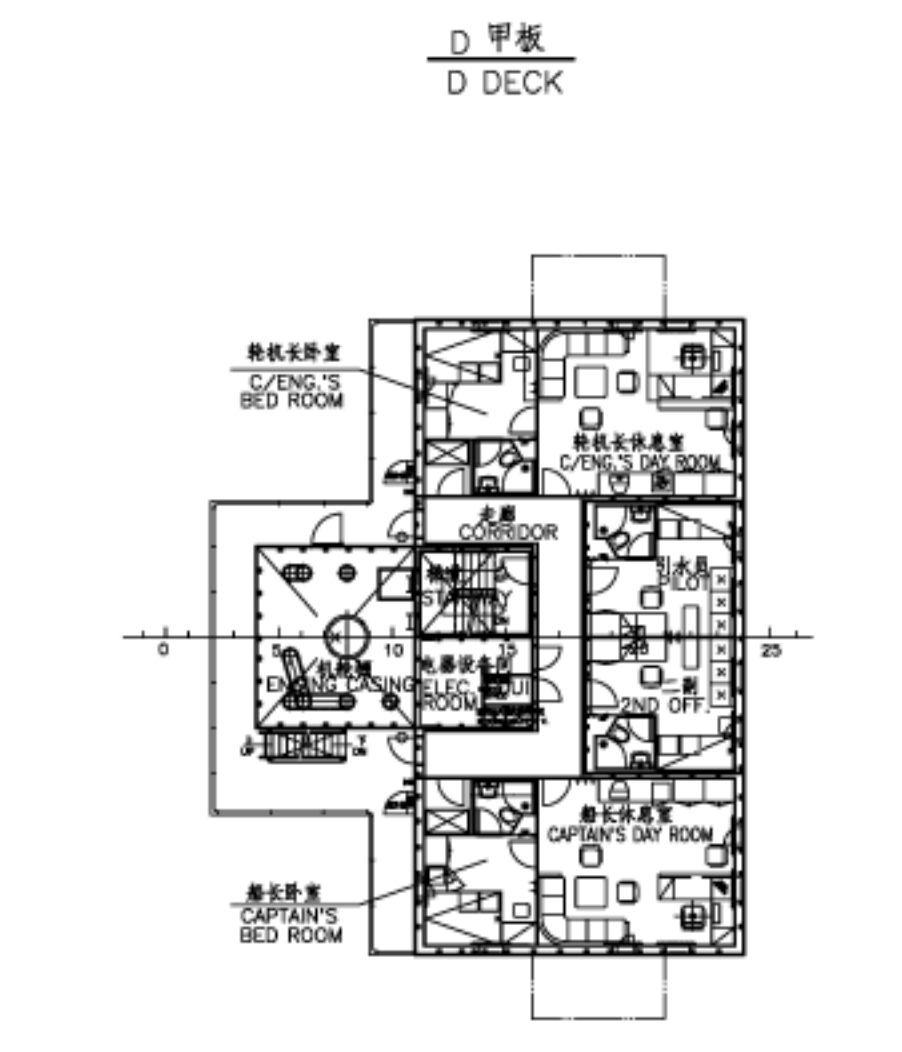
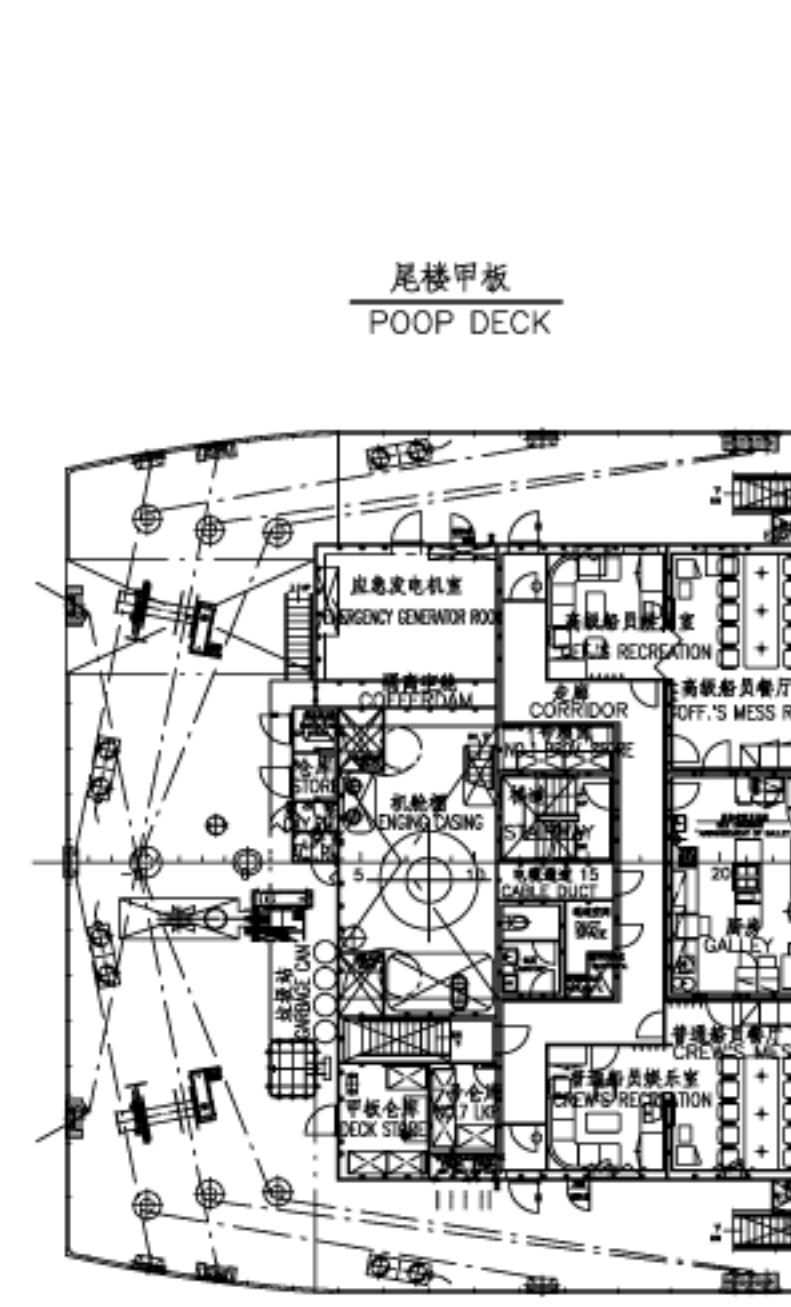
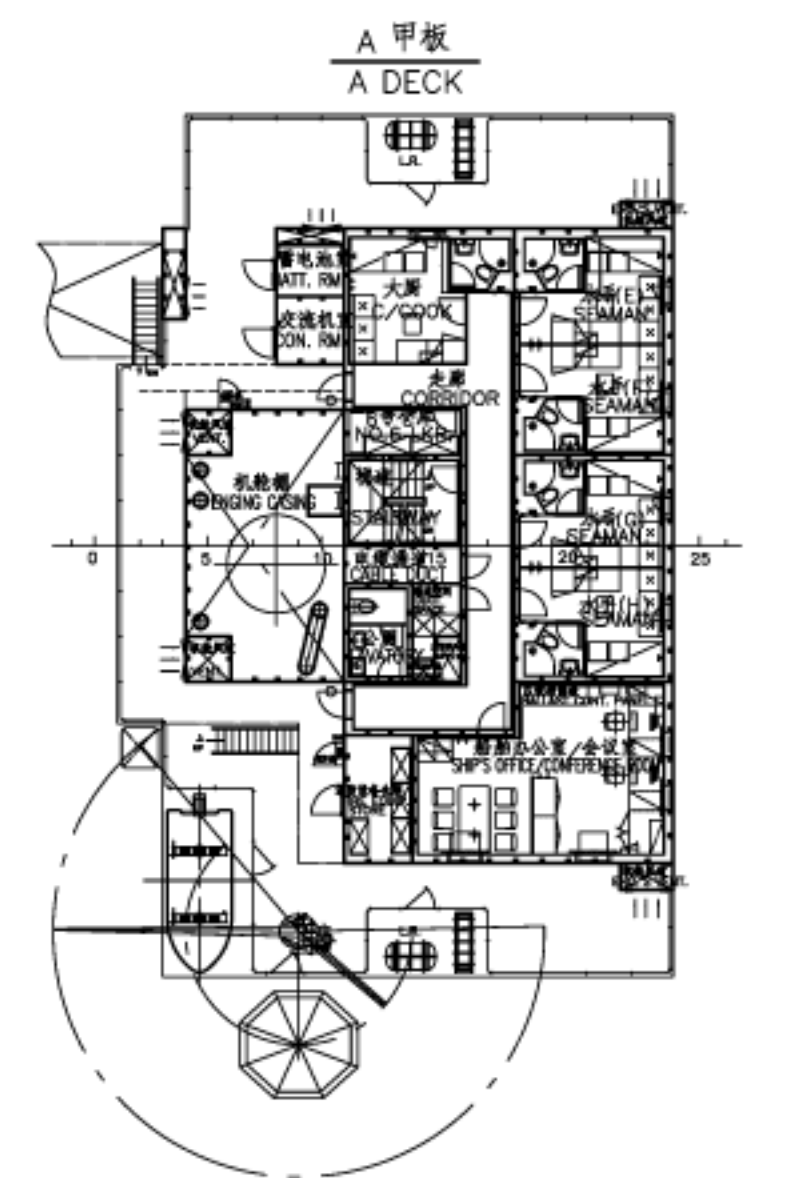
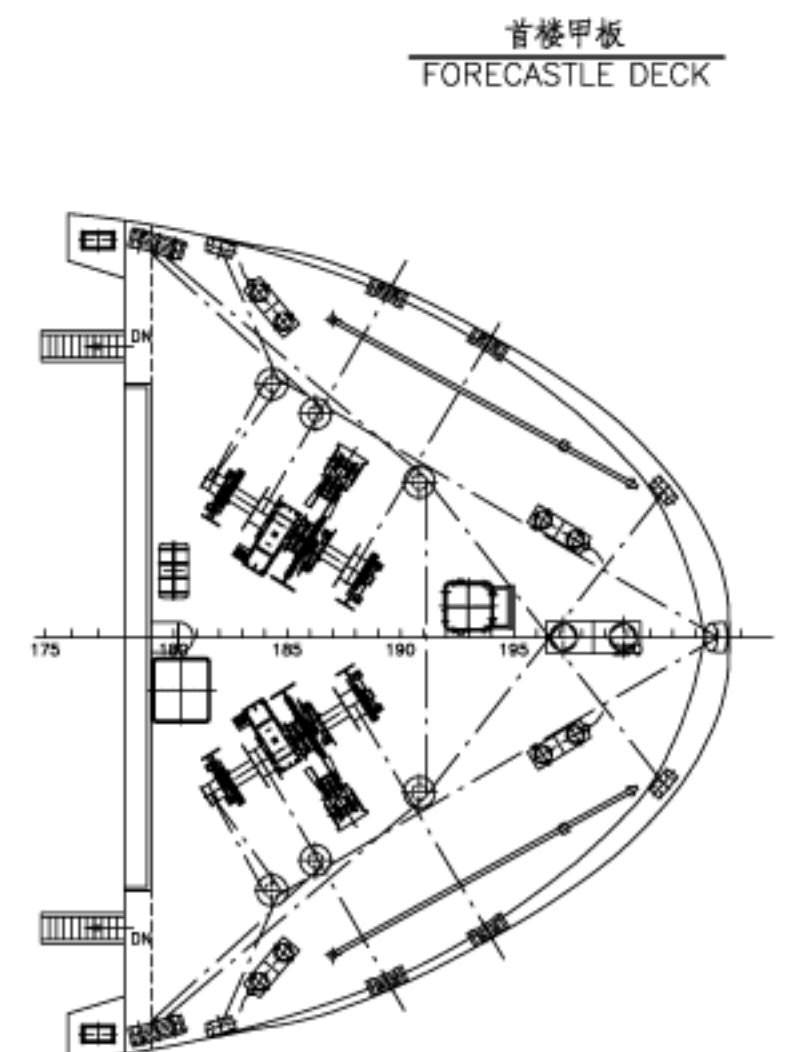
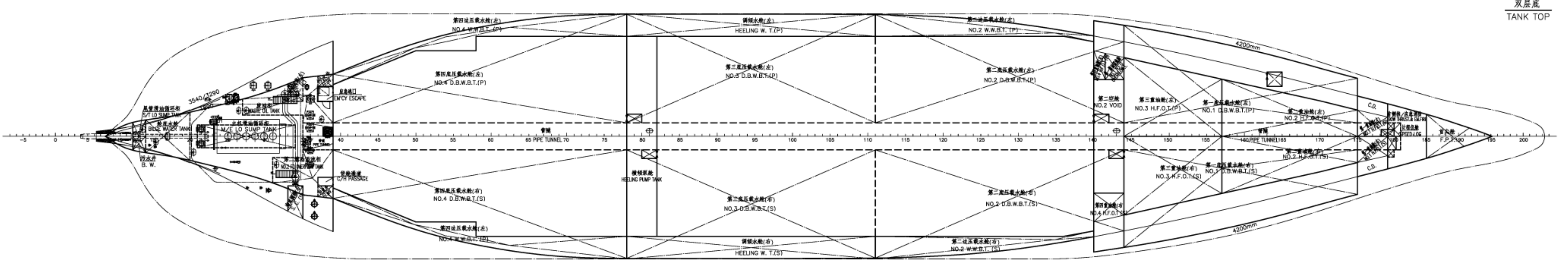
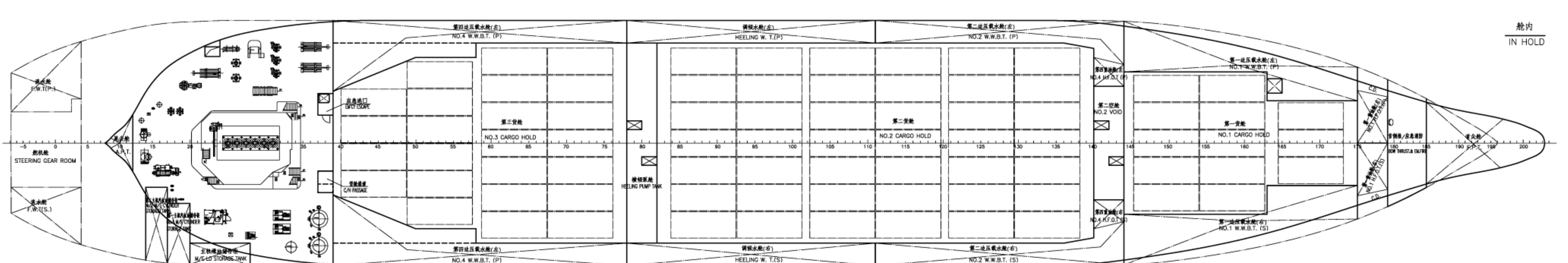
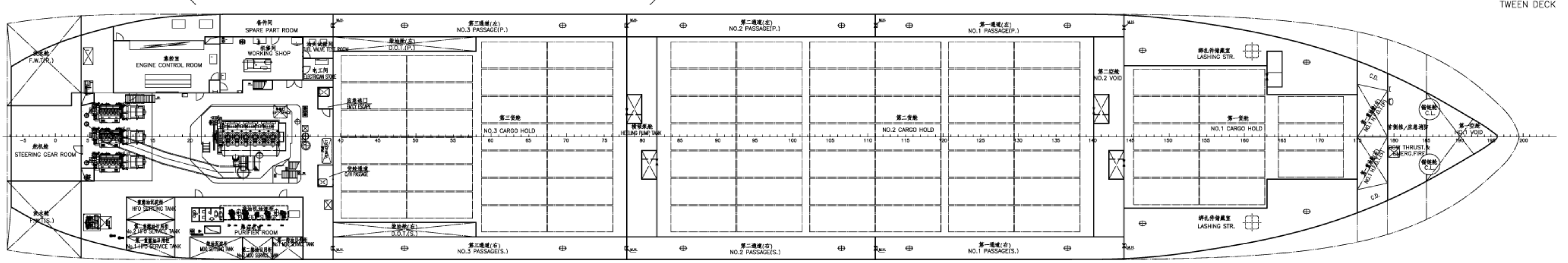
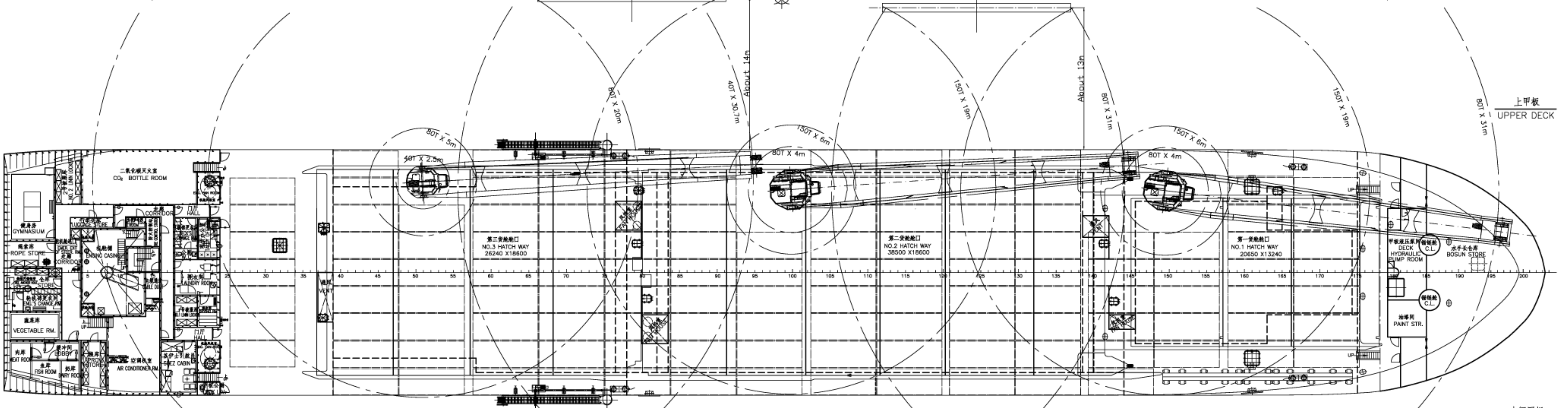
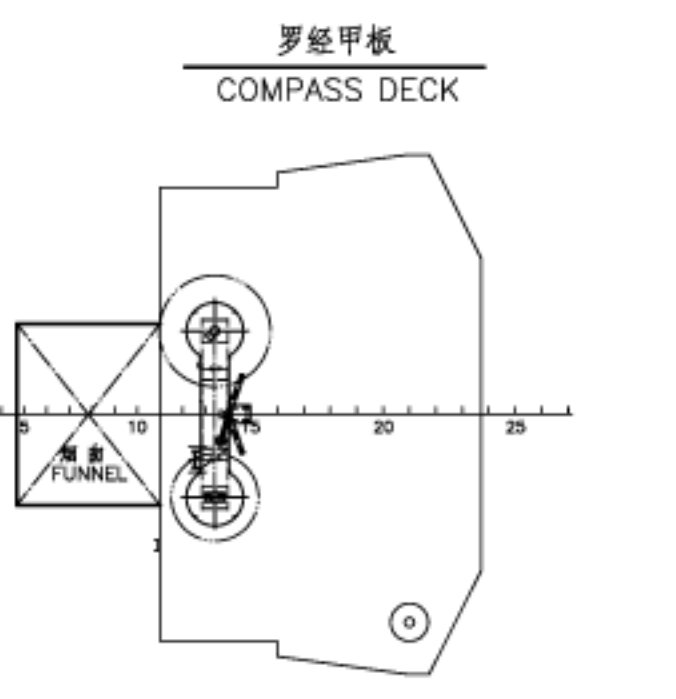


3003  
100/001/202/1000 3003

31	29	27	25	23	21	19	17	15	13	11	09	07	05	03	01	SAY NOT 20'	TOTAL (TEU)	
42		43(R14)	35	41(R14)	41	34	34	24(R10)	33	33	33	33(R14)	18	15(R8)	24	21	ON DECK (5 TIER)	504(R80)
	28	30	35	35	35	35	35	35	35	35	35	35	20	20	12	IN HOLD (5 TIER)	390	
42		71(R14)	65	76(R14)	76	34	69	59(R10)	68	68	68	68(R14)	18	35(R8)	44	33	TOTAL ( 20' )	894(R80)



日期 DATE	版本 REVISION MARK	备注 DESCRIPTION	设计 DESIGNED	校对 CHECKED	审核 APPROVED
2008-03-20	A	FOR APPROVAL	姜旭	王萍	王萍



总长 LENGTH O.A.	约 144.00m
船体长度 LENGTH B.P.	134.00m
宽度 BREADTH M.O.	22.80m
深度 DEPTH M.O.	13.35m
吃水 DRAUGHT	8.80m
设计吃水 DESIGNED DRAFT	9.85m
最大吃水 MAXIMUM DRAFT	13.800m
最大吃水 AT DESIGNED DRAFT 设计吃水	13.800m
最大吃水 AT SCANTLING DRAFT 标准吃水	17.200m
集装箱容量 (TOTAL) CONTAINER CAPACITY (TOTAL)	894TEU
甲板 ON DECK	504(R80)TEU
舱内 IN HOLD	390TEU
主机 MAIN ENGINE	Wartsila NSD 6RTA81-B
主机功率 MAIN ENGINE POWER	8730kW X 127r/min
主机转速 MAIN ENGINE RPM	7857r/min X 122.8r/min
续航力 ENDURANCE	约 12000 n.miles
稳性 STABILITY	20P
服务速度 (设计吃水 / 15% 稳性裕量) SERVICE SPEED (at designed draft/15% sea margin)	约 16.3kn/a
服务速度 (标准吃水 / 15% 稳性裕量) SERVICE SPEED (at scantling draft/15% sea margin)	约 17.2kn/a
分类 CLASSIFICATION	LL +100k Multi-Purpose Dry Cargo Ship, Strengthed for Heavy Cargo, 无限制

会签:

船体: 姜旭 08.03.21

内装: 刘静国 08.03.21

外贸: 姜旭 08.03.21

船板: 王萍 08.03.21

空冷: 姜旭 08.03.21

电气: 姜旭 08.03.21

船号 HULL NO.	17,000吨多用途货船	CSCD	DC07202,100,001
船名 CLASS.	CL	详细设计	DETAIL DESIGN
设计 DESIGNED	姜旭 08.03.20	校对	CHECKED
审核 CHECKED	姜旭 08.03.20	审核	REVIEWED
审核 REVIEWED	姜旭 08.03.21	审核	STANDARDIZED
审核 STANDARDIZED	姜旭 08.03.21	审核	APPROVED
审核 APPROVED	姜旭 08.03.21	审核	APPROVED